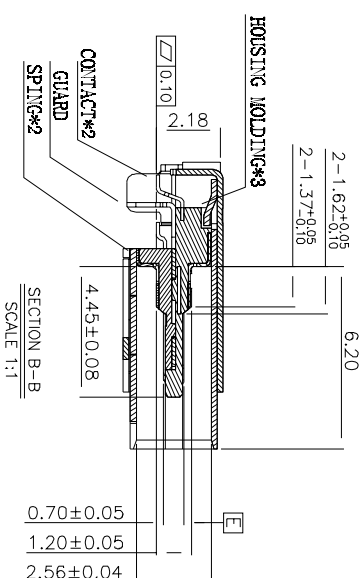
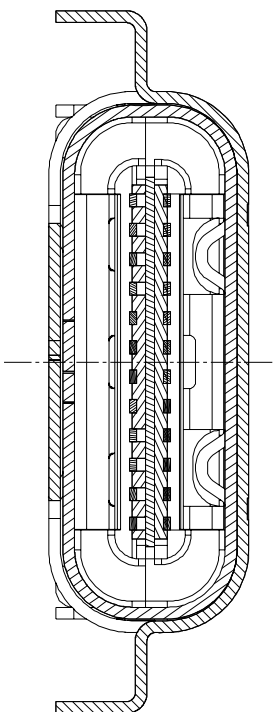


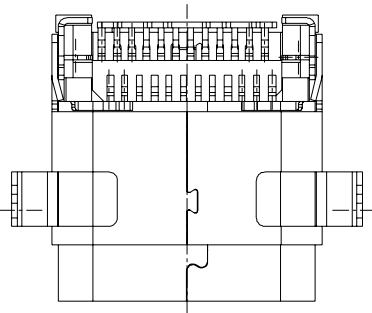
- NOTES:
1. MATERIAL: HOUSING: THERMOPLASTIC, U94V-0, COLOR: BLACK
CONTACT: COPPER ALLOY
SHELL: STAINLESS STEEL
GUARD: STAINLESS STEEL
SPRING: STAINLESS STEEL
 2. Finish: CONTACT: 30u" Au GOLD PLATING ON CONTACT AREA
GOLD FLASH PLATING ON SOLDERTAILS
80u" Min Ni UNDERPLATING OVER ALL
- SHELL: 50u" Min Ni PLATING OVER ALL.
2. PRODUCT SPECIFICATION:
VOLTAGE RATING: 100V AC
INSULATION RESISTANCE: 100MΩ
CONTACT RESISTANCE: 40mΩ
INSERT FORCE: 5-20N Max.
EXTRACT FORCE: 8-20N Min.
DURABILITY: 10000 CYCLES



SECTION C-C
SCALE 2:1

SECTION A-A
SCALE 1:1

SECTION B-B
SCALE 1:1



RJ45 LED SIDE ENTRY PCB JACK

NOT SCALED DRAWING
TOLERANCE UNLESS OTHERWISE NOTICE

INCH

MM

DR. Nina

DATE

HENGLIAN ELECTRONIC TECHNOLOGY CO., LTD

THIRD ANGLE PROJECTION

LINEAR
MM
INCH

RADII

MM

CKD Jack

MAY-06-12

DWG. NO.

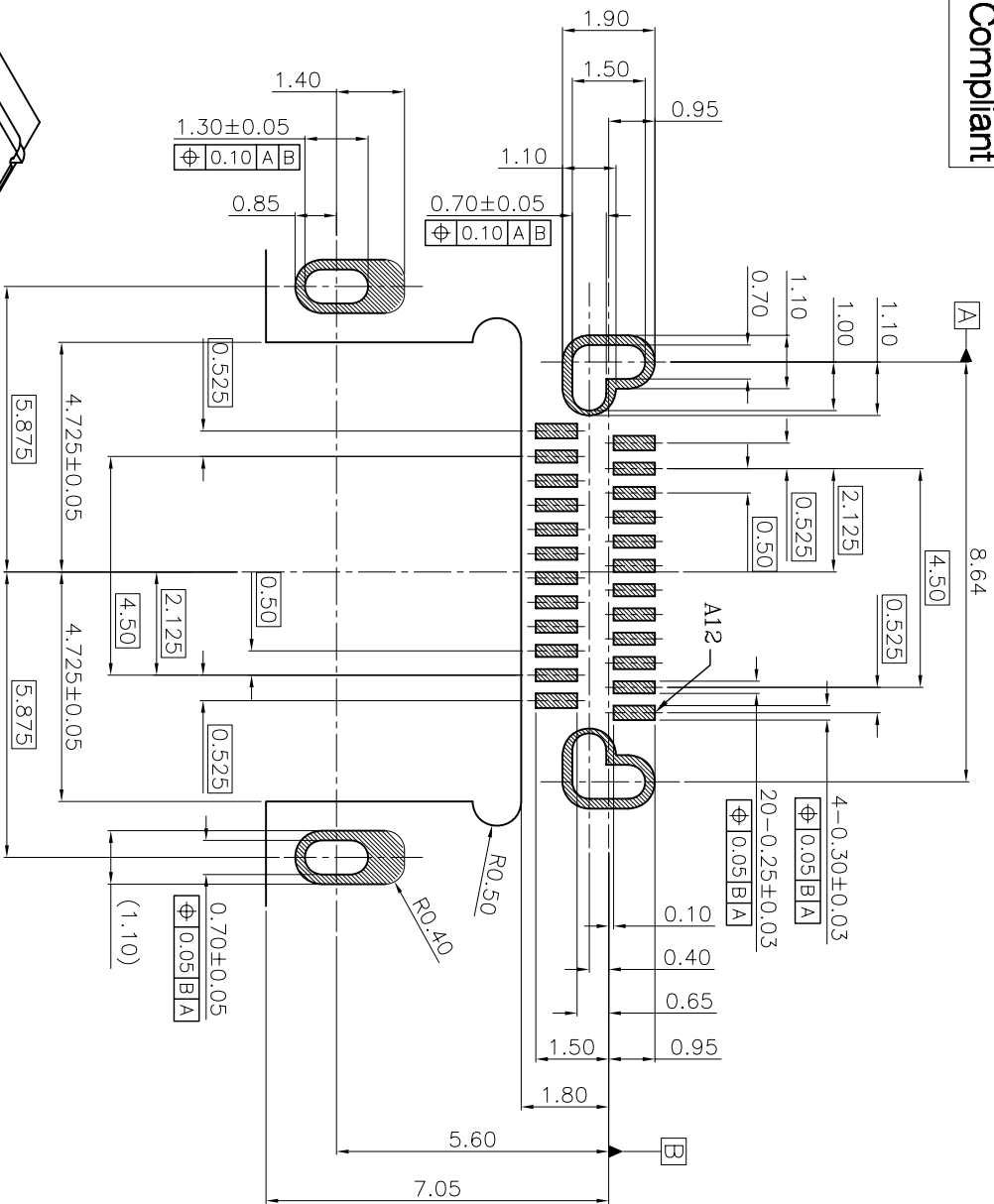
HL012015215340

APPD Jack

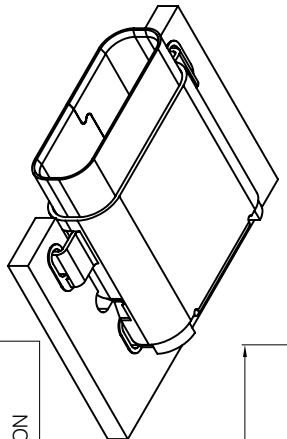
MAY-06-12

恒连电子科技有限公司
http://www.chinarj45.com

RoHS Compliant



RECOMMEND PCB LAYOUT
(THICKNESS: 1.00 OR 1.20mm)



Pin	Signal Name	Description	Pin	Signal Name	Description
A1	GND	Ground return	B12	GND	Ground return
A2	SSTXP1	Positive half of first SuperSpeed TX differential pair	B11	SSTXP1	Positive half of first SuperSpeed TX differential pair
A3	SSTXN1	Negative half of first SuperSpeed TX differential pair	B10	SSTXN1	Negative half of first SuperSpeed TX differential pair
A4	Vbus	Bus Power	B9	Vbus	Bus Power
A5	CC1	Configuration Channel	B8	CC1	Configuration Channel
A6	Dp1	Positive half of the USB 2.0 differential pair-Position 1	B7	Dp1	Positive half of the USB 2.0 differential pair-Position 1
A7	Dn1	Negative half of the USB 2.0 differential pair-Position 1	B6	Dn1	Negative half of the USB 2.0 differential pair-Position 1
A8	RFU1	Reserved for Future Use (RFU)	B5	RFU1	Reserved for Future Use (RFU)
A9	Vbus	Bus Power	B4	Vbus	Bus Power
A10	SSRXn2	Negative half of second SuperSpeed RX differential pair	B3	SSRXn2	Negative half of second SuperSpeed RX differential pair
A11	SSRXp2	Positive half of second SuperSpeed RX differential pair	B2	SSRXp2	Positive half of second SuperSpeed RX differential pair
A12	GND	Ground return	B1	GND	Ground return

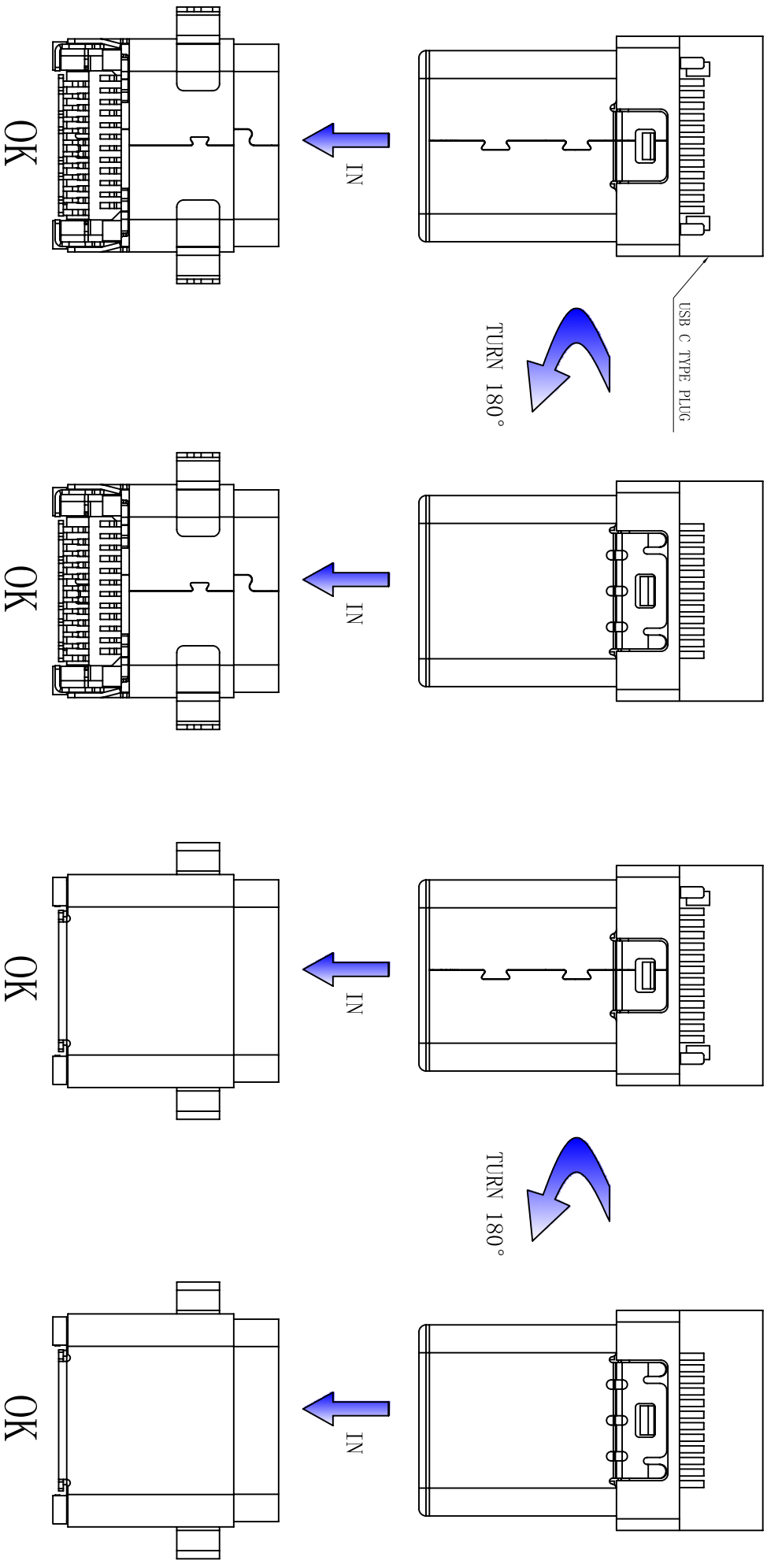
NOT SCALED DRAWING	TOLERANCE UNLESS OTHERWISE NOTICE	INCH	MM	DR.	DATE
THIRD ANGLE PROJECTION	LINEAR	MM INCH	MM INCH	Nina Jack	MAY-06-12

HI-USB-C

DWG. NO. HL012015215340

HENGLIAN ELECTRONIC TECHNOLOGY CO., LTD

恒连电子科技有限公司
http://www.chinarj45.com



	NOT SCALED DRAWING	TOLERANCE UNLESS OTHERWISE NOTICE	INCH	MM	DR. Nina	DATE MAY-06-12	HENGLIAN ELECTRONIC TECHNOLOGY CO., LTD 恒连电子科技有限公司 http://www.chinar.j45.com
HL-USB-C	THIRD ANGLE PROJECTION	LINEAR	.00-0.01 .000-0.005 .0000-0.002	.00-0.25 .000-0.13 .0000-0.05	CKD Jack	MAY-06-12	
DWG. NO. HL012015215340	MM INCH	ANGLE+0° 30'	RADIL	+0.45 -0.15	APP'D Jack	MAY-06-12	

